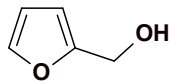


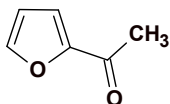
Furan structures



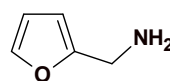
Furan: **C**
CAS No. 110-00-9



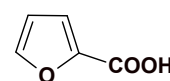
2-Furfuryl alcohol: **C**
CAS No. 98-00-0



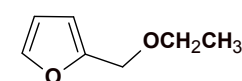
2-Acetylfuran: **C**
CAS No. 1192-62-7



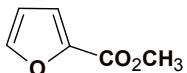
2-Furfurylamine: **C**
CAS No. 617-89-0



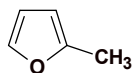
2-Furoic acid: **C**
CAS No. 88-14-2



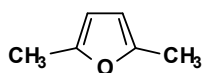
Ethyl furfuryl ether: **C**
CAS No. 6270-56-0



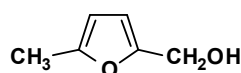
Methyl 2-furoate: **C**
CAS No. 611-13-2



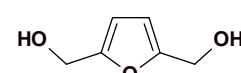
2-Methylfuran: **C**
CAS No. 534-22-5



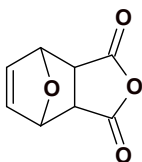
2,5-Dimethylfuran: **C**
CAS No. 625-86-5



5-Methyl furfuryl alcohol: **C**
CAS No. 3857-25-8



2,5-bis(hydroxymethyl) furan: **P**
CAS No. 1883-75-6



exo-3,6-Epoxy-1,2,3,6-Tetrahydro-phthalic
Anhydride: **C**
CAS No. 6118-51-0

C: Commercial scale, P: Pilot scale



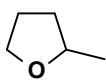
Di or tetrahydrofurfuryl structures



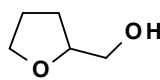
2,3-Dihydrofuran: **P**
CAS No. 1191-99-7



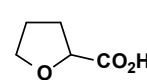
Tetrahydrofuran: **C**
CAS No. 109-99-9



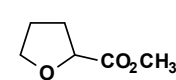
2-MethylTHF: **C**
CAS No. 96-47-9



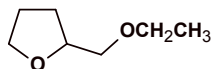
Tetrahydrofurfuryl alcohol: **C**
CAS No. 97-99-4



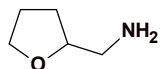
Tetrahydrofuroic acid: **C**
CAS No. 16874-33-2



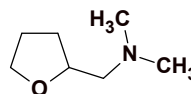
Methyl tetrahydrofuroate: **C**
CAS No. 37443-42-8



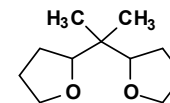
Ethyl tetrahydrofurfuryl ether: **C**
CAS No. 62435-71-6



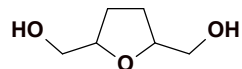
2-Tetrahydrofurfurylamine: **C**
CAS No. 4795-29-3



2-dimethyltetrahydrofurfurylamine: **P**
CAS No. 30727-09-4

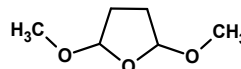


2,2-Ditetrahydrofurylpropane: **C**
CAS No. 89686-69-1



2,5-bis(hydroxymethyl) tetrahydrofuran: **P**
CAS No. 104-80-3

NEW

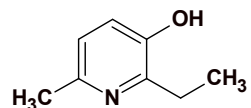


2,5-dimethoxytetrahydrofuran: **C**
CAS No. 14044-65-6

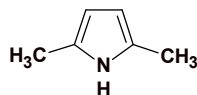
C: Commercial scale, P: Pilot scale



Non Furan structures



2-Ethyl-6-methyl-3-pyridinol: **C**
CAS No. 2364-75-2



2,5-Dimethylpyrrole: **C**
CAS No. 625-84-3



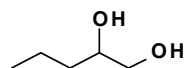
3,4-Dihydro-2H-pyran: **C**
CAS No. 110-87-2



Cyclopropyl carboxaldehyde: **C**
CAS No. 1489-69-6

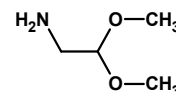


Cyclopropyl methanol: **C**
CAS No. 2516-33-8



1,2-Pentanediol: **C**
CAS No. 5343-92-0

NEW



2,2-dimethoxyethylamine: **C**
CAS No. 22483-09-6

C: Commercial scale, P: Pilot scale

